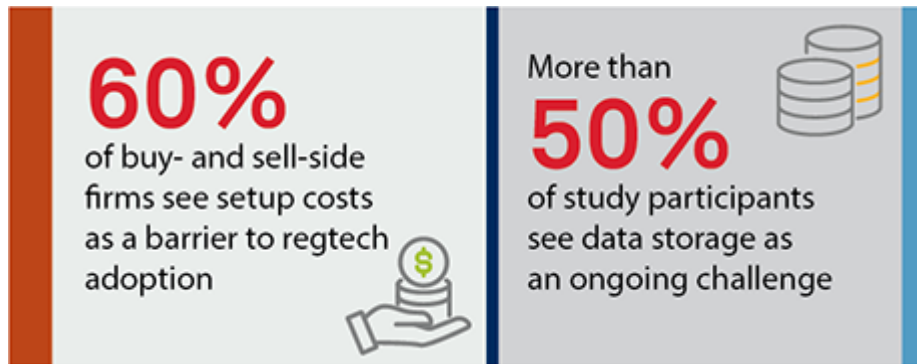


The Future of Trade Surveillance

April 11, 2023

Executive Summary:



This Greenwich Report explores several drivers of investment in surveillance technology. These range from the system upgrades via new technology, better data, more analysis tools and methods, and connecting disparate systems and information. More specifically:

- Surveillance capabilities have grown substantially over the past three years, driven in part by the global pandemic and the subsequent emergence of new communication channels and the explosion of data. Research respondents commented that the volume of data fed into surveillance tools has increased anywhere from 12% to 15% in just the last year.
- Consequentially, investments in regtech have increased steadily (by 20% each year since 2020), culminating in an estimated \$1.8 billion on technology spending globally in 2022. Steady increases were observed across both buy-and sell-side firms. Drivers include post-pandemic and macro effects, such as the introduction of more communications channels resulting from work-from-home and hybrid work environments coupled with unpredictable and volatile markets.
- Surveillance gaps have arisen out of a confluence of factors: increased volatility in the market, growing trading volumes, new communication modalities used by regulated employees, operational uncertainty, and regulatory and reputational concerns. As a result, 72% of study respondents believe technology spending will continue to accelerate in 2023 and beyond.
- Regtech barriers still exist. Although firms have many regtech aspirations and wants, approximately 60% of buy- and sell-side firms in this study feel that set up costs—including technology infrastructure, internal support staff and even time needed to learn and adapt to new systems—are a non-trivial barrier to implementing modern regtech.¹ Some of the more forward-looking professionals we spoke with believe these costs are well worth it in the longer term and will save resources and time, ultimately reducing total cost of ownership (TCO).
- Overall, the future is bright for regtech improvements and investment despite cost challenges. Study participants feel optimistic about modern tech adoption, such as AI/ML and cloud, and better integration of systems. When asked whether the industry is at a turning point that demands more

modern compliance systems and technology, over 50% agree the space is ripe for a tech upgrade.²

Methodology:

In Q3 2022, Coalition Greenwich interviewed several dozen compliance, front-office and risk professionals of Tier 1 and regional sell-side banks and brokers, buy-side investment firms, numerous data providers, as well as major service providers in the United States to better understand trends in surveillance spending and challenges presented by evolving communications channels and growing data sets. The heads of business and executives participating in this research represent a meaningful portion of the capital markets surveillance technology ecosystem. Coalition Greenwich estimates and analyses are based on these conversations and proprietary data.



www.greenwich.com | ContactUs@greenwich.com

Coalition Greenwich, a division of CRISIL, an S&P Global Company, is a leading global provider of strategic benchmarking, analytics and insights to the financial services industry.

We specialize in providing unique, high-value and actionable information to help our clients improve their business performance.

Our suite of analytics and insights encompass all key performance metrics and drivers: market share, revenue performance, client relationship share and quality, operational excellence, return on equity, behavioral drivers, and industry evolution.

About CRISIL

CRISIL is a leading, agile and innovative global analytics company driven by its mission of making markets function better. It is majority owned by S&P Global Inc., a leading provider of transparent and independent ratings, benchmarks, analytics, and data to the capital and commodity markets worldwide.

CRISIL is India's foremost provider of ratings, data, research, analytics, and solutions with a strong record of growth, culture of innovation, and global footprint.

It has delivered independent opinions, actionable insights and efficient solutions to over 100,000 customers through businesses that operate from India, the U.S., the U.K., Argentina, Poland, China, Hong Kong, and Singapore.

For more information, visit www.crisil.com

Disclaimer and Copyright

This Document is prepared by Crisil Coalition Greenwich, which is a part of Crisil Ltd, a company of S&P Global. All rights reserved. This Document may contain analysis of commercial data relating to revenues, productivity and headcount of financial services organisations (together with any other commercial

information set out in the Document). The Document may also include statements, estimates and projections with respect to the anticipated future performance of certain companies and as to the market for those companies' products and services.

The Document does not constitute (or purport to constitute) an accurate or complete representation of past or future activities of the businesses or companies considered in it but rather is designed to only highlight the trends. This Document is not (and does not purport to be) a comprehensive Document on the financial state of any business or company. The Document represents the views of Crisil Coalition Greenwich as on the date of the Document and Crisil Coalition Greenwich has no obligation to update or change it in the light of new or additional information or changed circumstances after submission of the Document.

This Document is not (and does not purport to be) a credit assessment or investment advice and should not form basis of any lending, investment or credit decision. This Document does not constitute nor form part of an offer or invitation to subscribe for, underwrite or purchase securities in any company. Nor should this Document, or any part of it, form the basis to be relied upon in any way in connection with any contract relating to any securities. The Document is not an investment analysis or research and is not subject to regulatory or legal obligations on the production of, or content of, investment analysis or research.

The data contained in the Document is based upon a particular bank's scope, which reflects a bank's data submission, business structure, and sales revenue Reporting methodology. As a result, any data contained in the Document may not be directly comparable to data presented to another bank. For franchise benchmarking, Crisil Coalition Greenwich has implemented equal ranking logic on aggregate results i.e., when sales revenues are within 5% of at least one competitor ahead, a tie is shown and designated by = (where actual ranks are shown). Entity level data has no equal ranking logic implemented and therefore, on occasion, the differences between rank bands can be very close mathematically.

The data in this Document may reflect the views reported to Crisil Coalition Greenwich by the research participants. Interviewees may be asked about their use of and demand for financial products and services and about investment practices in relevant financial markets. Crisil Coalition Greenwich compiles the data received, conducts statistical analysis and reviews for presentation purposes to produce the final results.

THE DOCUMENT IS COMPILED FROM SOURCES CRISIL COALITION GREENWICH BELIEVES TO BE RELIABLE. CRISIL COALITION GREENWICH DISCLAIMS ALL REPRESENTATIONS OR WARRANTIES, EXPRESSED OR IMPLIED, WITH RESPECT TO THIS DOCUMENT, INCLUDING AS TO THE VALIDITY, ACCURACY, REASONABLENESS OR COMPLETENESS OF THE INFORMATION, STATEMENTS, ASSESSMENTS, ESTIMATES AND PROJECTIONS, ANY WARRANTIES OF MERCHANTABILITY OR FITNESS FOR A PARTICULAR PURPOSE ARISING OUT OF THE USE OF ALL OR ANY OF THIS DOCUMENT. CRISIL COALITION GREENWICH ACCEPTS NO LIABILITY WHATSOEVER FOR ANY DIRECT, INDIRECT OR CONSEQUENTIAL LOSS OR DAMAGE OF ANY KIND ARISING OUT OF THE USE OF ALL OR ANY OF THIS DOCUMENT.

Crisil Coalition Greenwich is a part of Crisil Ltd., an S&P Global company. ©2025 Crisil Ltd. All rights reserved.